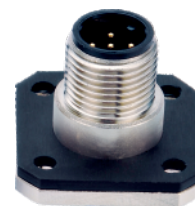
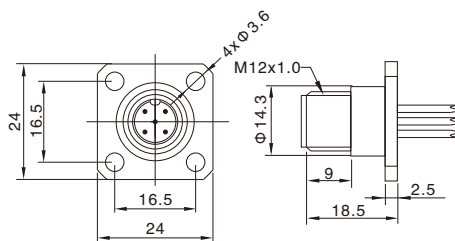


M12 Male Panel Mount, Solder, with Flange

- Connector series: M12
- Gender: Male
- Coding: A,B,C,D
- Locking type: Fix screw
- Mounting type: Flange
- Part No.: MB12MS*FLF**ST

* refers to coding type
 ** refers to pins number



General information

Standard:	IEC 61076-2-101
Ambient temperature:	-20°C ~ +80°C
Connector insert:	TPU
Connector contacts:	Brass with gold plated
Connector nut/screw:	Brass with nickel plated
Seal / O-ring:	Epoxy resin / FKM

Insulation resistance:	≥ 100MΩ
Contact resistance :	≤ 5mΩ
Shielding:	Unavailable
IP rating:	IP68 in locked condition
Mating endurance:	>500 cycles

Electrical data & Mechanical data

Contacts	Available Coding				Contacts termination	Rated current	Voltage		Wire gauge / size		Part No.
	A	B	C	D			A/C	D/C	AWG	mm ²	
03 pins					Solder version	4A	250V	250V	22AWG	0.34	MB12MSAFLF03ST MB12MSBFLF03ST MB12MSCFLF03ST
04 pins					Solder version	4A	250V	250V	22AWG	0.34	MB12MSAFLF04ST MB12MSBFLF04ST MB12MSCFLF04ST MB12MSDFLF04ST
05 pins					Solder version	4A 2A (C-code)	60V	60V	22AWG 24AWG (C-code)	0.34 0.25 (C-code)	MB12MSAFLF05ST MB12MSBFLF05ST MB12MSCFLF05ST
06 pins					Solder version	2A	30V	30V	24AWG	0.25	MB12MSCFLF06ST
08 pins					Solder version	2A	30V	30V	24AWG	0.25	MB12MSAFLF08ST
12 pins					Solder version	1.5A	30V	30V	26AWG	0.14	MB12MSAFLF12ST
17 pins					Solder version	1.5A	30V	30V	26AWG	0.14	MB12MSAFLF17ST

Remarks

- Please refer to Page 578 for the Conversion between American Wire Gauge AWG and Wire Cross-section mm².
- Please refer to Page 96 for products' part number encoding rule.