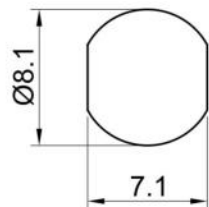
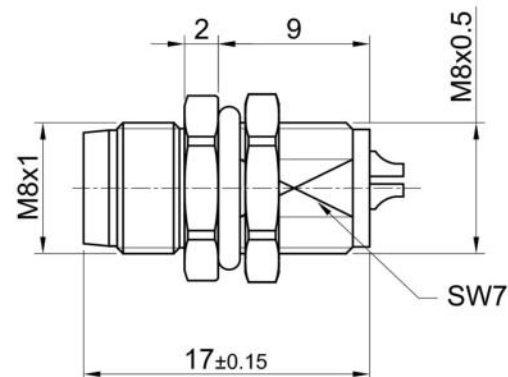
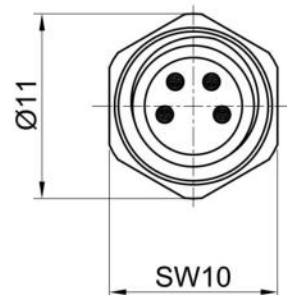


Male Front View



Panel Cut-Out



Technical specifications:

Connector locking system: Screw
Termination: Soldering
Temperature range: -25°C ~ +80°C
Pollution degree: 3
Degree of protection: IP68 when mated
Mating cycles: >100

Rated voltage: 60V AC/DC
Rated current: 3A
Contact resistance: ≤5 mΩ
Insulation resistance: ≥100 MΩ

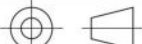

Contacts
Contacts carrier
Base shell
Hex nut
O ring
Seal

CuZn,Gold plated
PA66+GF
CuZn nickel plated
CuZn nickel plated
Rubber
Epoxy resin

Other Notes:

- 100% test to ensure there is no mis-wires, shorts and opens.
- Test voltage 300V
Insulation resistance 20MΩ
Conductor resistance 2Ω Max.
- Assembly processing standard according to IPC-A-620

All materials are RoHS compliant

 THIRD ANGLE	NAME		DATE	MATERIAL:	VOLUME:	MASS:
	DRAWN	Jason	5/25/2019			
GENERAL TOLERANCE (UNLESS SPECIFIED)	CHECKED			TITLE		
	RELEASE			M8 4P MALE, FRONT MOUNTING, SOLDER CUP		
ISO2768-mK	 TROMMTEC <small>alles um die Trommel</small>			PART NO.		DWG NO.
				TT- MB08MSARF04ST		ED-102-656
	UNIT	REV.	SIZE	SHEET		
	MM	A	A4	1 OF 1		